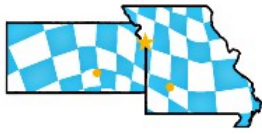


**BMW Car Club
of America
Kansas City**



MilePost

P.O. Box 4832 Overland Park, KS 66204

Volume 10, Issue 3

Fall 2018



Kansas City BMW Club—Serving Kansas and Western Missouri

The 2018 Kansas City BMW Club Board

President	Angel Hall	president@kcbmwclub.org
Vice President	Joe Myers	vicepresident@kcbmwclub.org
Treasurer	Mike Staub	treasurer@kcbmwclub.org
Secretary	Tricia Nygren	secretary@kcbmwclub.org

Appointees:

Driving Events	John Fickel	chiefinstructor@kcbmwclub.org
MilePost Editor	Ryan Neis	editor@kcbmwclub.org

Members at Large:

VP Wichita	Kathy Felter	Vp-wichita@kcbmwclub.org
VP Springfield	Skip Motsenbocker	Vp-springfield@kcbmwclub.org
Webmaster	Greg Lippert	webmaster@kcbmwclub.org
Chief Driving Inst.	Ryan Staub	chiefinstructor@kcbmwclub.org
	Jurgen Rosner	

Milepost is a publication of the Kansas City BMW Club, BMW Car Club of America, Inc. and is mailed to all members in good standing. Additional copies may be purchased for \$1.00 each, plus postage. All contents remain the property of the Kansas City BMW Club. Information supplied is provided by members and for members only. The Club is in no way associated with BMW of North America, or any other agents of Bayerische Motoren Werke, AG. The Club assumes no liability for any information herein. Please note that, unless clearly stated, no information in this publication bears the status of "factory approved." Ideas, opinions, and suggestions expressed herein are those of the authors. No authentication is implied by the Club, officers, editor, or publisher. Modifications to vehicles within the warranty period may void the warranty, in full or in part. Permission is granted to BMW CCA and BMW ACA chapters to reproduce articles originating in *the Milepost*, provided full credit goes to the author and *the Milepost*. "BMW", the "M" logo, "The Ultimate Driving Machine," and the BMW roundel logo are registered trademarks of BMW AG. © 2010 Kansas City BMW Club.

Inside this issue:

President's Corner	3
New Friends of KC BMW Club	4
Upcoming Events	4
Amazing Rolls Royce	6

Cover: Brad Perkins of Chicane Motorsports E46 M3 track beast, taken at Chicane Motorsports BMW CCA open house last fall.

KC BMW Club

Announcement List

Want to stay up to date on the latest happenings in the BMW Club?

Sign up for the KC BMW Club Email list! We'll notify you of upcoming events and other club news. Sign up at: <http://www.kcbmwclub.com>

Email blasts are only sent about 2 times a month—so you don't have to worry about too many emails!



Join Today!

Let's Get SOCIAL!

You can find us at:

@KCBMWCLUB on Twitter

&

BMW CCA—Kansas City

BMW CCA—Wichita

BMW CCA—Springfield-Ozarks
on Facebook



The Presidents Corner

By: Angel Hall

You know that feeling when you see bright colored vehicles on the street and think "Wow! Does that guy need batteries with that paint job??" What on earth are they thinking, right?



They may actually be onto something. According to numerous color studies & vehicle safety for visibility, the brighter colors are the winners. We visually are drawn to the brightest colors, even though we can see mil-

lions of shades and hues with our eyes. Test it out at a stoplight. Look around you, and make note of the first cars you notice- and which ones your eyes glaze past.



Quick! Which car did you notice FIRST?

Likely the white convertible in front- then possibly the bright red Mazda in the background...

Yellow cars are eye-catching, bright, and very easy to spot on the road. This visual contrast to pavement and surroundings makes these cars hard to miss. It is no surprise why yellow is chosen for school buses and taxi cabs.

White cars are great in summer since they do not retain the heat, but can blend into the sky visually, and in snowy conditions- you get the idea. But for nighttime driving, white cars are a spotlight on the stage. This also applies to cream colored cars.

They are light enough to stand out beautifully.



Even in mixed lighting- you can see how white blends a little more to sky and street to the right, but contrasts to the shade on the left.

Orange cars are not only a rare color to find (many manufacturers do not make cars in Orange) but consistently ranks high in the safest of all car colors for visibility. Not as deep as red, but still more subtle than yellow, this color has trouble blending into the background just about anywhere.



Ohhh I don't think anyone would accuse this orange of blending in...

Gold and Silver cars have high-reflective properties in metallic finishes, but can sometimes blend in on overcast days. Generally, these shades are great contrasts to dark streets and buildings. Silver also blends in far more on overcast & rainy



days, but is a very popular choice for resale value and still ranks high on visibility safety for lighter 'platinum-like' shades. Granted, this is a more 'copper' color - but if it weren't for the design- the color could be easily dismissed as the street..

Pink / Lavender cars are the most unique vehicles out there. Not a lot of things on the road that are pink, so from a safety standpoint- pink wins! One of the



drawbacks is from peer feedback of owning a pink vehicle...but if you can giggle along with them, you have a safe car that doesn't blend in. You might get some teasing from friends....unless it's something boss like this!

Green generally blends into the environment, trees, grass, lampposts and sometimes buildings. If it is a brighter shade of green (like the Java Green BMW Individual M4 seen at BMW of Kansas City South) then you have a better chance of standing out on the highways. This color will have you standing out-anywhere. It's THAT awesome!



Red cars are sometimes given a bad rep as 'ticket me Red', but the deeper shades do tend to blend in more than the brighter ones. That being said, more commercial buildings and signage use red as a means to gain visual attention. 'Red gets Read' as the saying goes- and the brighter it is, the more it looks like a stop light. Maybe not a bad thing...Reds just scream for attention...until it's dark



Blue cars are the least safest. Surprisingly the super light shades tend blend into the sky, while darker shades look almost black. Brighter shades get noticed better- my z4 looks almost black on the end. At quick glance the MINI and z3 pop right out in this lineup.



Celebrate the Drive!!
z4ngel



New Friends of KC BMW Club!

Upcoming Events

We would like to extend a warm welcome to our newest members, as well as those who've come back in the family recently:

The KC BMW Club looks forward to spending time with you at future events!

Nathaniel Abdul-Hameed

Aaron Alt

Michael Ayars

Graf Balda

Brad Bartholomew

Ben Blackford

Mark Cochran

James Corrick

Dave Eckhart

Jim Evernham

Haroon Ferhut

Thomas Gill

Kyle Hawkes

Douglas Hitchcock

Mark Ibenthal

Donald Indermuehle

Jase Jackson

Jenka Korman

Christopher Lee

Mark Matousek

Michael Mizzell

Scott Nash

McKay Perry

Brady Robb

Jarrett Rule

Jason Sebring

Marvin Smith

Chris Smith

Jason Vaughn

Miles Whitley

Mike Wiegers

KC Cars & Coffee

First Saturday, Every Month, 9am-?

Next up April 6th

Panera Bread

10606 Shawnee Mission Pkwy, Shawnee, KS

Springfield Cars & Coffee

First Saturday, Every Month, 8:30am-10

Next up April 6th

Reliable BMW

3500 E Sunshine St, Springfield, MO

Wichita Cars & Coffee

Second Saturday, Every Month, 9am-?

Next up April 13th

BMW of Wichita

11000 E 13th St N, Wichita, KS. 67206

High Performance Driving School

Special Guest: Ross Bentley
Professional Coach & Racer



The Midwest's Premier BMW Festival

June 1-2, 2019

Great Plains Chapter St. Louis Chapter
Kansas City Chapter Sunbelt Chapter

Sat evening dinner & 1/4 Mile Solo Runs

FlatOut
CLASSIC
FlatOutClassic.com

The Most Amazing Rolls Royce I Have Ever Seen

By Jurgen Rosner, Board Member

In April of this year, I traveled to Reno, Nevada for a business conference and happened upon the National Automobile Museum, which displays historic automobiles from the late 19th century and throughout the 20th century. The museum is sometimes referred to as The Harrah Collection because most of the vehicles displayed are

from the collection of the late casino owner, William F. Harrah. There are hundreds of automobiles in this museum but I think the most impressive is the 1921 Rolls-Royce. This Rolls-Royce, with a body from Brockman Coachbuilders, was assembled using full sheets of solid copper .065 inches thick (yes, solid copper, the whole chassis of the car is solid copper) in order to avoid welded seams and rivets on the body and fenders.

Accessories are nickel and German silver. The beautiful wood trim is made from makash ebony. Historical records indicate the coachbuilder had to purchase an entire tree to obtain this rare wood!

The aesthetic perfection of this Silver Ghost, restored by Tom Batchelor and friends of Reno, Nevada is matched by its flawless mechanical

performance. Its 454 cubic inch six-cylinder engine moves



1921 Rolls-Royce	
Model:	Silver Ghost
Built By:	Rolls-Royce London and Derby, England
Price:	\$16,000
Engine:	6 Cylinder, L-head
Bore:	4 ½"
Stroke:	4 ¾"
Displacement:	453.5 Cu. In.

the car along at modern speeds with the smooth, silent performance of years gone by. Unique in the world, this copper-bodied Rolls-Royce Silver Ghost exemplifies the finest of the auto maker's art.

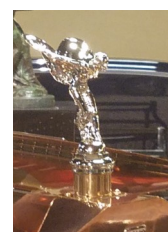
From 1904 to 1949, the Rolls-Royce factories in Derby, England and Springfield, Massachusetts produced only complete running chassis. The coachwork was completed by coach builders that specialized in building bodies. Although these were custom bodies, some styles were offered as "standard" to save time and money.

In other cases, the sky was the limit if a customer desired coachwork that was unique. Bodies were constructed from virtually any suitable material and included aluminum, steel, German silver, wood, wicker, papier-mâché and fabric. The more exotic the construction, the greater the appeal to elite buyers who wanted a one-of-a-kind automobile to



"one up" their friends and the rest of the world. It was not uncommon for a maharajah to order a Roll-Royce with coachwork of polished metal trimmed in gold or silver and outfitted with special guns and lamps, just for the purpose of tiger hunting.

Even though there are no BMWs on display, I highly recommend that you take time to visit this museum if you travel anywhere in the Reno area.





Butler's C & D Body Shop
 5747 Kessler, Merriam, KS 66203 • Tel: (913)262-9109
 Fax: (913) 262-2828 Web: www.butlerbody.com



Trek Bicycle Shawnee

10412 Shawnee Mission Pkwy
 Shawnee , Kansas , 66203
 913-631-6800

trekbikes.com

Alliance

Home Health Care, Inc.

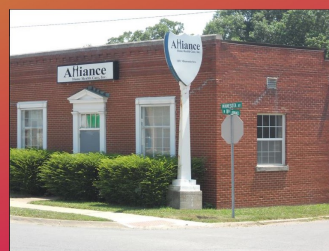
Alliance has provided Aides to assist individuals in their homes and has grown to now provide Cognitive Therapy and Transitional Living specialist. We have Nurses on staff to do wellness monitoring and the initial evaluation.

Alliance also subcontracts out with your KanCare MCO to help individuals return back to the community and on their own from Nursing Facilities through the MFP program.

If you know of anyone that is seeking any of these services, give us a call at 913-233-0160.

Providing Quality Care with a Personal Touch

<http://www.alliancehomehealth.org/>



bimmerworld

- Proven Parts
- Experienced Staff
- Same-Day Shipping
- Secure Online Orders

www.BimmerWorld.com

FIND THE RIGHT PARTS FAST

Our new search engine allows you to browse our expanded inventory to quickly locate the right parts for your BMW





10% Over Cost on Parts purchased at Parts Counter
20% off Any Service over \$250.00
\$69.95 Oil Change*

\$15.00 Over Cost on Tires

Must present current BMW CCA membership card to receive any specials or discounts.

* Offer excludes already discounted parts and labor menu items.
Coupon must be presented at the time of write up.
One coupon per customer.
and cannot be used with another specials, promotions, or offer.
No cash value and is not retroactive.



9010 Shawnee Mission Parkway
Merriam, KS. 66202

(913) 722-5100

baronbmw.com



BMW OF SPRINGFIELD
3521 E. Sunshine Street
Springfield, MO
65809

417-459-4488

<https://www.bmwofspringfield.com>

10% off Parts & Services for Members

Must present proof of membership

BMW
of Kansas City South



**The Ultimate
Driving Machine®**

www.bmwofkansascitysouth.com

**BMW CCA Club Members Receive
10% Off Parts & Service***
816-895-6228



Hendrick
AUTOMOTIVE GROUP

*Must present current BMW CCA
Membership card.
Offer Expires 12/31/2018

BMW of Wichita
11000 E. 13th St.
Wichita, KS 67206
833.699.6671
BMWofWichita.com



**The Ultimate
Driving Machine®**

**BMW CAR CLUB OF
AMERICA MEMBERS
SAVE ON SERVICE.**

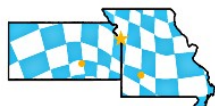
10% Discount on Service & Parts
for BMWCCA members.

SALES HOURS
Mon-Thurs 9:00am-8:00pm
Fri 9:00am-7:00pm
Sat 9:00am-6:00pm
Sun Closed

SERVICE HOURS
Mon-Fri 7:30am-5:30pm
Sat 9:00am-5:00pm
Sun Closed

Must show current CCA
membership card.

**BMW Car Club
of America
Kansas City**



PO Box 4832 Overland Park, KS
66204

We're on the Web!
kcbmwclub.com



TRUSTED, RELIABLE CAR REPAIR
and Performance Upgrades

(816) 656-2733
Mon - Fri: 7:30 AM - 5:30 PM
200 E. Shrader Street Bldg B , Liberty, MO 64068


LOCKTON
AFFINITY

MOTORSPORTS